

# Creative Currents

Emerging Perspective II

Chief guest  
Nighat Yawar Ali

Curated by M. Awais

11th April 2025 5:00 pm

Exhibition will continue till 21st April

Aaila Zahra  
Abdul Wahab  
Ali Arshad  
Alishba Binte Faysal  
Bareera  
Hadia Hassan  
Laraib Amin  
Maheen Khan  
Maheen Elahi  
Muneeba Shakil  
Rabia Mohsin  
Rafay Talpur  
Sabir Hussayn  
Swarim Abid  
Usama Ishaq  
Waleed Bin Shahzad  
Zeeshan Amjad

🌐 [www.ejazartgallery.com](http://www.ejazartgallery.com) ✉ [info@ejazartgallery.com](mailto:info@ejazartgallery.com) 📷 [f](#) [t](#) [ejazartgalleries](#)  
Cell: +92 300 8447748 79-B/I, off M.M. Alam Road, Gulberg III, Lahore, Pakistan

  
**EJAZ**  
ART GALLERY

Ejaz Art Gallery proudly presents 'Creative Currents: Emerging Perspectives II', a continuation of our commitment to spotlighting the evolving voices of young artists from the National College of Arts. This edition expands beyond the figurative to embrace a diverse range of artistic genres, reflecting the breadth of contemporary practice and the fluidity of creative expression.

Many of the works in this exhibition navigate the complexities of self-dialogue, where multiple versions of the self co-exist, interact, and evolve. Through repetition and layering, artists visualize the fragmented yet interconnected aspects of identity, memory, and emotional experience. Others turn to materiality and process as a means of engaging with time—capturing the quiet transformations embedded in everyday life, where decay and erasure are not seen as losses but as acts of renewal.

Memory, too, is a central theme, approached as both a personal archive and a shifting, mutable entity. Some works reinterpret familial and cultural histories, weaving nostalgia with contemporary reflections, while others emphasize the fluidity of remembrance, where images and emotions emerge, dissolve, and reconfigure through the act of making.

At its core, this exhibition is an exploration of transformation—whether through material processes, shifting identities, or the passage of time itself. The exhibition invites viewers to witness these moments of change, where the past is not fixed, but in constant flux, and where meaning is continually reshaped through the act of looking, remembering, and experiencing.



## **Aaila Zahra**

Born in 2002, Aaila Zahra is a visual artist based in Lahore, Pakistan. She graduated from the National College of Arts in December 2024, specializing in miniature painting. Using gouache on archival paper as her primary medium, she creates dense and intricate paintings of her home, using the building, foliage, weather, and even light as metaphors to express her concerns about memories and the concept of home.





Aaila Zahra Butt | Gouache on Arches Paper | 10 x 15.5 inches

A Moment of Tranquility



Aaila Zahra | Gouache on Arches Paper | 19 x 23 inches  
Within a Dream



**Abdul Wahab**

My practice focuses on the representation of form, space, light, and other elements of vision that humans experience as part of their relationship with nature. I also explore the properties of oil paint as a medium that resonates with these natural phenomena. These interests lead me to experiment with formal aspects of image-making and design elements such as texture, edge, value, and color, and how they can be combined to construct an experience that offers the viewer insight into these concerns. My current focus is on studying the relationship between the human figure and the space it inhabits, capturing how one's personal space serves as a window into their emotional states, experiences, and sense of identity. These settings become intimate narratives of transient lives—spaces where human presence lingers through objects and atmosphere.





Abdul Wahab | Oil on Canvas | 18 x 24 inches

Clarity Lingers



Abdul Wahab | Oil on Canvas | 25 x 31 inches

Last Light





Abdul Wahab | Oil on Canvas | 28 x 35 inches

Common Grounds



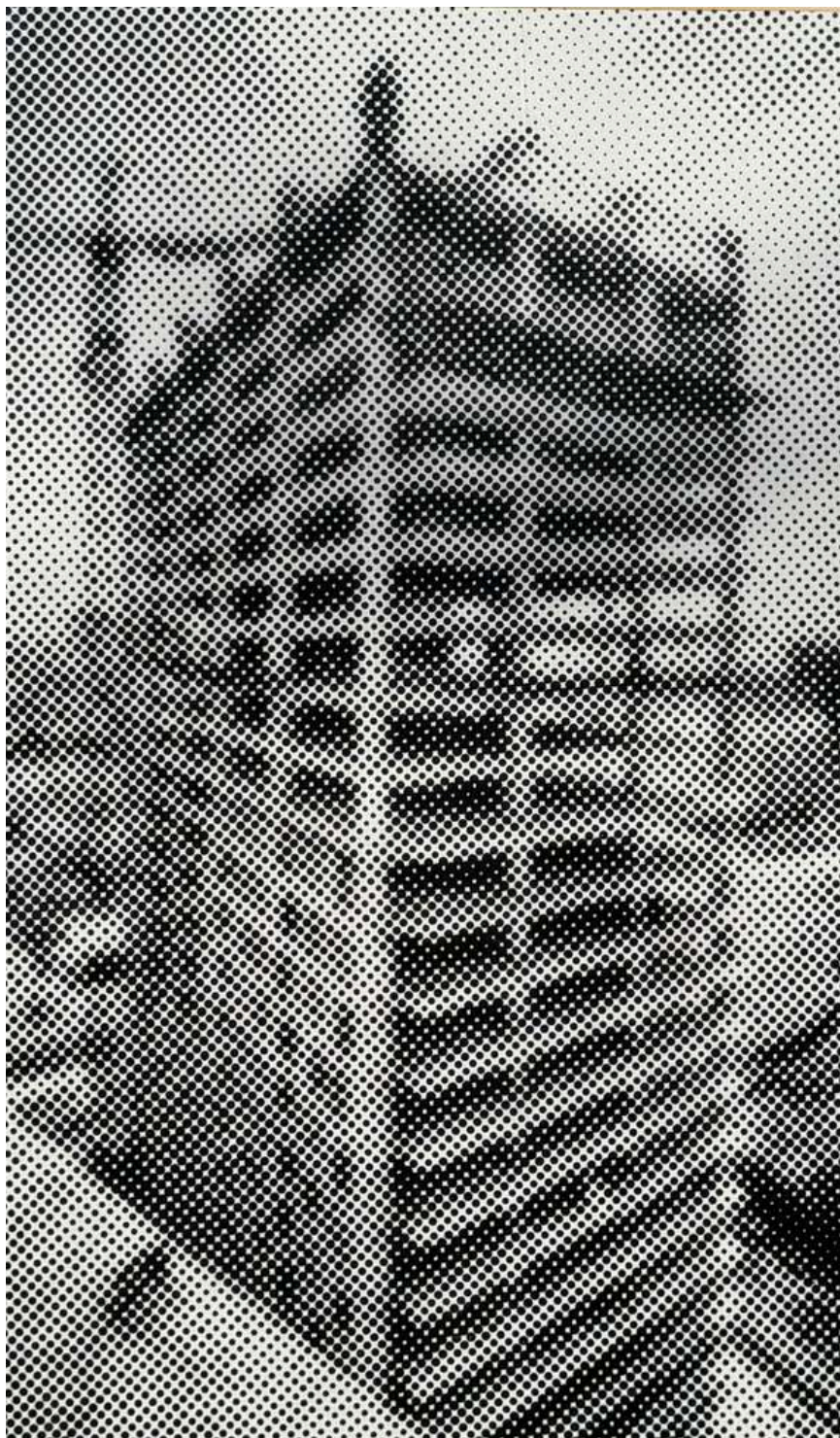
**Ali Bin Arshad**

My work explores perception, space, and illusion through pointillism. Using only dots that vary in size, density, and negative space, I construct architectural forms that shift between abstraction and clarity. Up close, the paintings dissolve into countless marks; from afar, they reveal tangible yet elusive structures.

The inspiration for these under-construction buildings comes from my fascination with both architecture and the ephemeral nature of progress. Just as a building takes shape through the careful placement of materials, my paintings emerge through the accumulation of dots, each contributing to the whole.

Through this work, I invite viewers to engage in an active dialogue with their own perception. The shifting nature of the image—where clarity emerges only through distance—becomes a metaphor for the way we understand the world: fragmented up close, yet coherent when we step back.

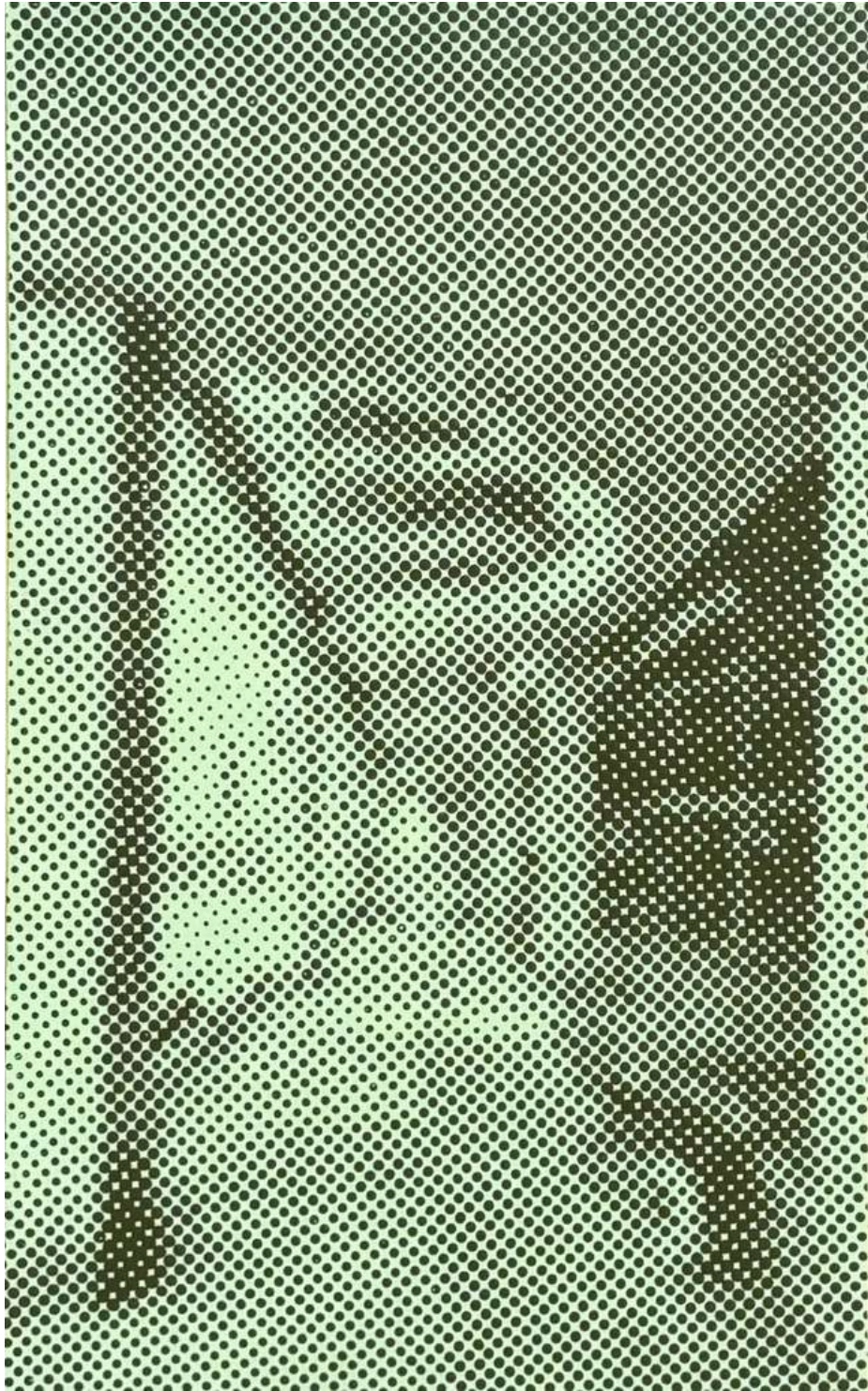




Ali Arshad | Acrylics on Canvas | 26 X 44 inches

Trapped in Transition

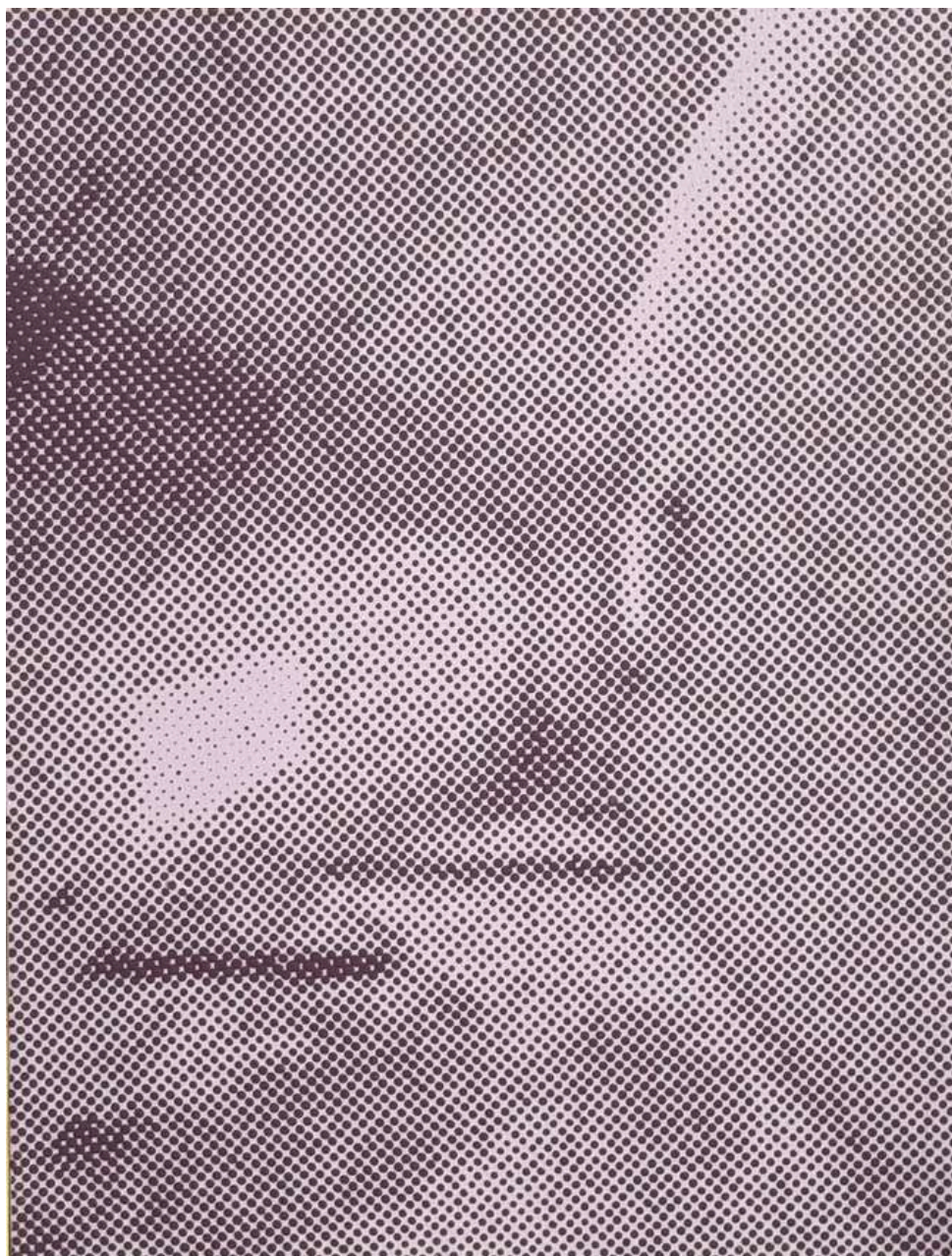




Ali Arshad | Acrylics on Canvas | 21 x 33 inches

Lost in the Details





Ali Arshad | Acrylics on Canvas | 17 X 21 Inches

Fading Perspectives





## **Alishba Binte Faysal**

My work is a continuous negotiation between memory, material, and process. Initially, I set out to depict memories, but over time, my focus shifted toward the physical act of painting and my engagement with the canvas. Using paint and charcoal, I build and erase layers, creating compositions as intricate and multifaceted as the experiences they stem from.

I am drawn to the idea that memories—like paintings—are never static. They shift, distort, and evolve over time. My process mirrors this transience; through constant addition and subtraction, the image undergoes multiple transformations before settling into its final form. This method allows me to explore the complexities of personal history, identity, and the passage of time. My references come from photographs of friends, family, and familiar spaces. The images of friends and family capture moments of togetherness or significance, while the images of spaces evoke a sense of both presence and absence. I am particularly interested in how these spaces hold memory, how they can feel full or empty depending on the context. Through layering paint, charcoal, and erasure, I explore how these familiar figures and places transform, creating paintings that preserve fragments of time while embracing the imperfections and fluidity of memory.





Alishba Binte Faysal | Acrylic, Oil & Charcoal on Canvas | 20 x 27 inches

My Mother's Apartment





Alishba Binte Faysal | Oil & Charcoal on Canvas | 32 x 42 inches

Circa 2002



Alishba Binte Faysal | Oil on Canvas | 12 x 12inches

In the Making





## **Bareera Sajid**

Bareera is a Lahore-based artist (b. 2001). She graduated with a BFA from the National College of Arts, Lahore, in 2024, specializing in miniature painting.

Using gouache on surfaces such as wasli, Arches, and other archival, 100% cotton papers, Bareera's paintings celebrate rich colors and intense observation. Plants serve as a metaphor to depict the intricate connections and paradoxical relationships between acceptance and resistance. Her process involves first studying the life and growth cycles of the plants she works with, then translating her observations into paintings that capture delicate symmetry and inherent repetition, exploring the complex yet beautiful processes of growth and transformation.



Bareera Sajid | Gouache on Wasli | 28 x 35 inches

Cockscomb



## **Hadia Hassan**

Hadia Hassan, a 24-year-old artist from Sialkot, graduated from NCA Lahore with a degree in Fine Arts, specializing in painting and working with acrylic paints. Hadia's work explores the interplay between the traces of human existence and nature. Her muted color palette and minimal landscapes evoke a sense of solitude and stillness. The lines in her work represent the passage of time and create a balance within the image. Each piece invites the viewer to pause and find meaning in the spaces.





Hadia Hassan | Acrylics on Canvas | 24 x 30 inches

Alone Again



Hadia Hassan | Acrylics on Canvas | 30 x 36 inches

Sundown





Hadia Hassan | Acrylics on Canvas | 12 x 24 inches

What Remains

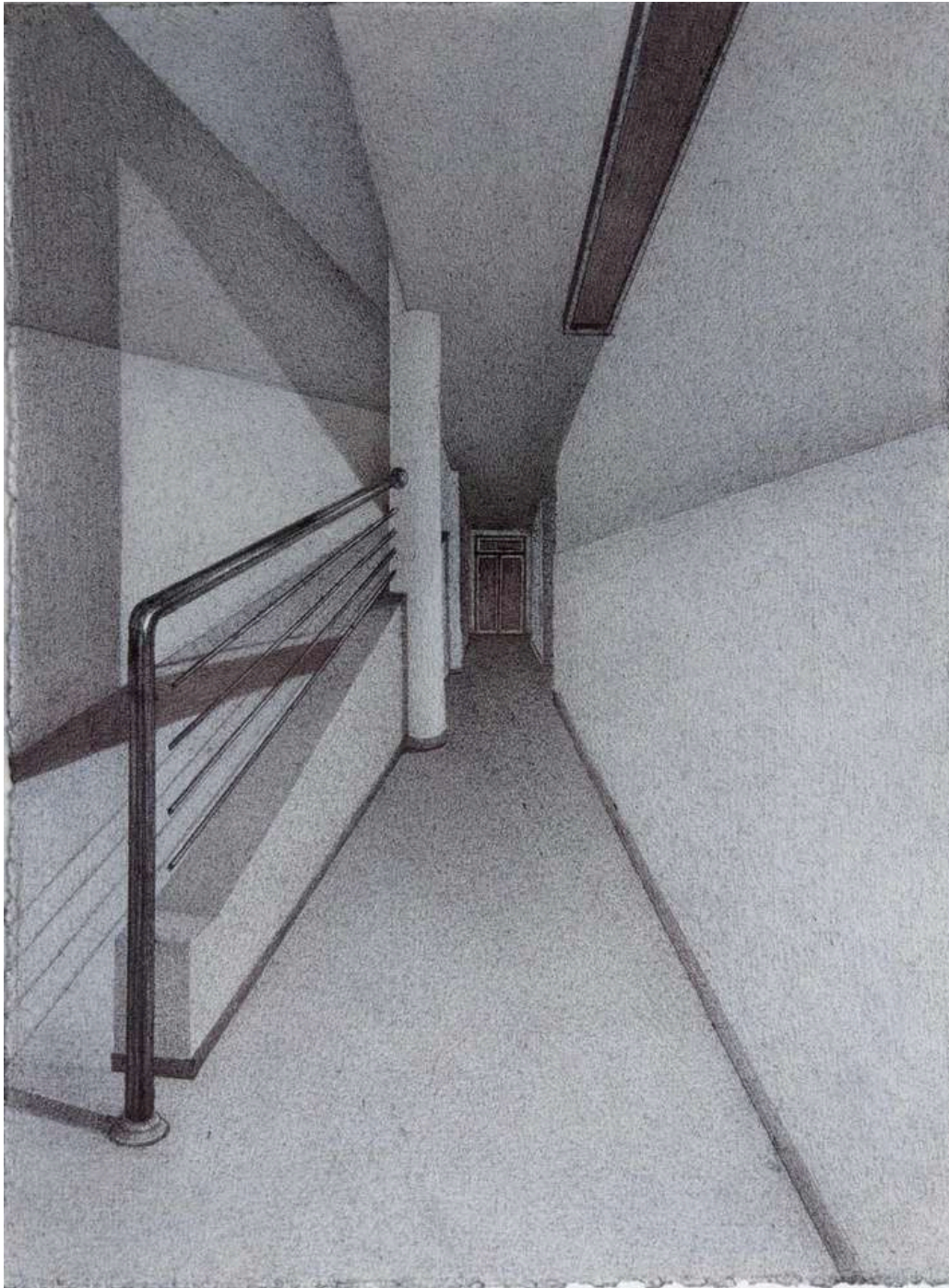


## **Laraib Amin**

Born in 2001, Laraib Amin is a visual artist based in Lahore, Pakistan. She graduated from the National College of Arts in Lahore in December 2024, from the Department of Miniature Painting.

Laraib primarily works with ballpoint pens on acid-free paper, as the gentle and repetitive technique becomes a form of active meditation while achieving the crisp precision and intricacy that her visuals require. Her delicately constructed images attempt to capture the discomfort experienced when re-encountering familiar spaces, reflecting on feelings of impermanence and disconnection. Using spatial elements metaphorically, she invites the viewer to contemplate the complex relationship between space, identity, and belonging, while underlining the contradictions and paradoxes that exist in our experience of home and homelessness.





Laraib Amin | Ballpoint on Acid Free Paper | 5.5 x 7.5 inches

Shattered Dimensions I



## **Maheen Khan**

Maheen Khan's work explores the tension between vulnerability and strength in women through stylized avian imagery, subtly evoking the female form. By blurring presence and absence, she challenges traditional views of femininity while allowing space for interpretation.

In her recent works, Khan shifts her focus to the depth and intricacy of female experiences, moving beyond direct bodily references. Birds remain central but often appear fragmented, emerging from ruptures or entangled in delicate constraints. These forms reflect both protection and limitation, mirroring the complexities of female existence. Through layered surfaces, muted tones, and the interplay of opacity and transparency, Khan captures the nuances of strength, fragility, and transformation.





Maheen Khan | Opaque Watercolors on Wasli | 10 x 14 inches

Untitled I



Maheen Khan | Opaque Watercolors on Wasli | 10 x 14 inches

Untitled II



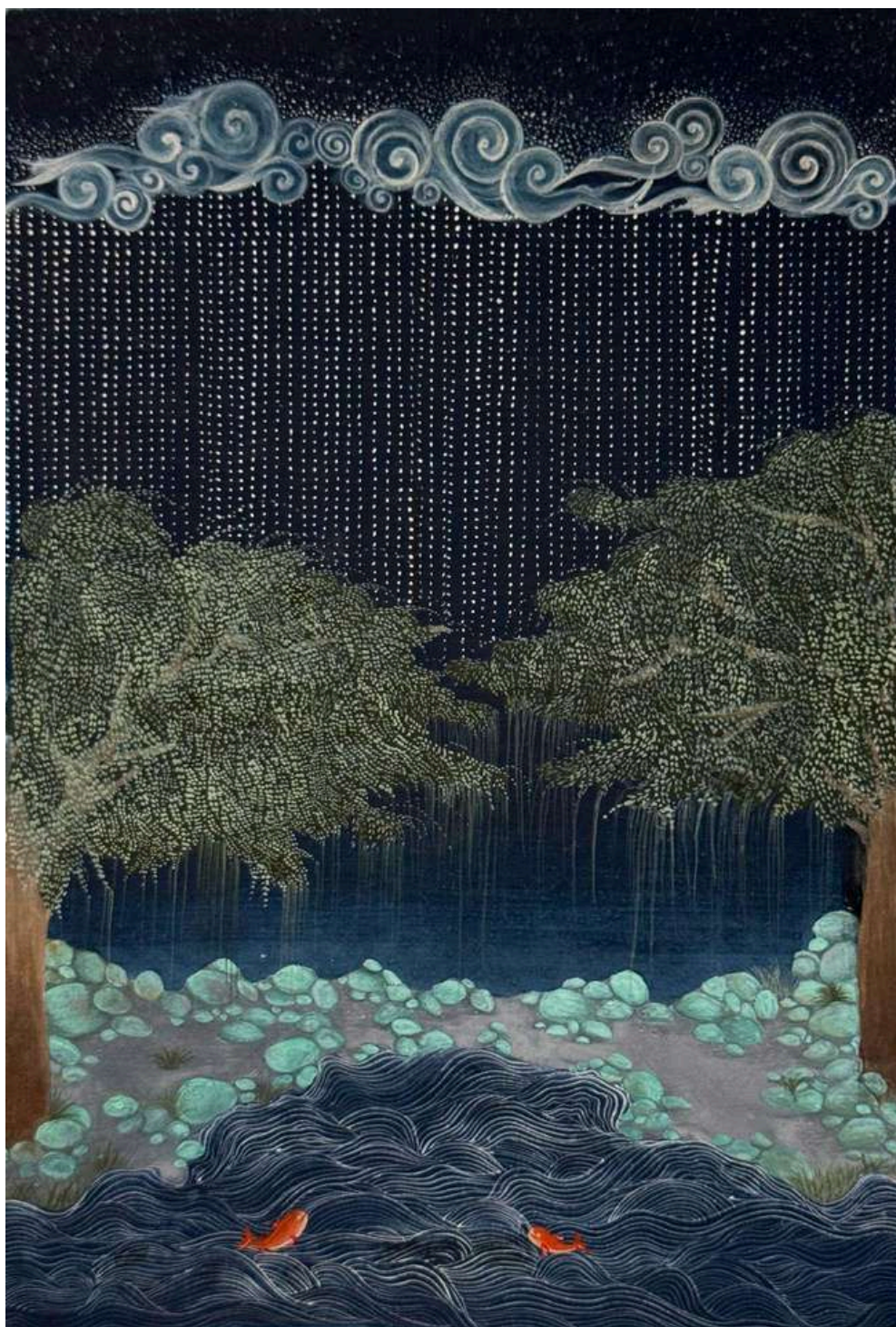


## **Maheen Elahi**

Maheen Elahi's work drifts between reality and reverie, exploring the quiet poetry of night skies, silhouetted trees, and ethereal landscapes. A recent graduate of NCA, Elahi is drawn to transitional moments where the boundaries between the seen and the imagined blur, creating spaces that feel both familiar and otherworldly.

Working predominantly in layered hues of blue, her compositions evoke a sense of calm while hinting at hidden depths beneath the surface. The recurring motifs of trees and nocturnal skies serve as metaphors for solitude, mystery, and the vastness of inner worlds. Through subtle shifts in tone, she invites viewers to linger in dreamlike spaces where time seems suspended, encouraging contemplation and quiet wonder.





Maheen Elahi | Gouache on Wasli | 6.1 x 8.7 inches

In Line With Rain





Maheen Elahi | Gouache on Wasli | 6.1 x 8 inches

Illuminated Silence





## **Muneeba Shakeel**

Muneeba Shakeel, born and raised in Karachi, Pakistan, earned a BFA from the National College of Arts in Lahore in 2025, majoring in painting.

Her practice focuses on breaking away from conventional imagery, evident through bold brushwork and the simplification of subjects in her paintings. These recent works present a paradox: while they attempt to capture movement, they also convey a sense of stillness and silence. The paintings are introspective, serving as self-reflections for the artist.





Muneeba Shakeel | Acrylics on Canvas | 18 x 24 inches

In Transition



Muneeba Shakeel | Acrylics on Canvas | 12 x 20 inches

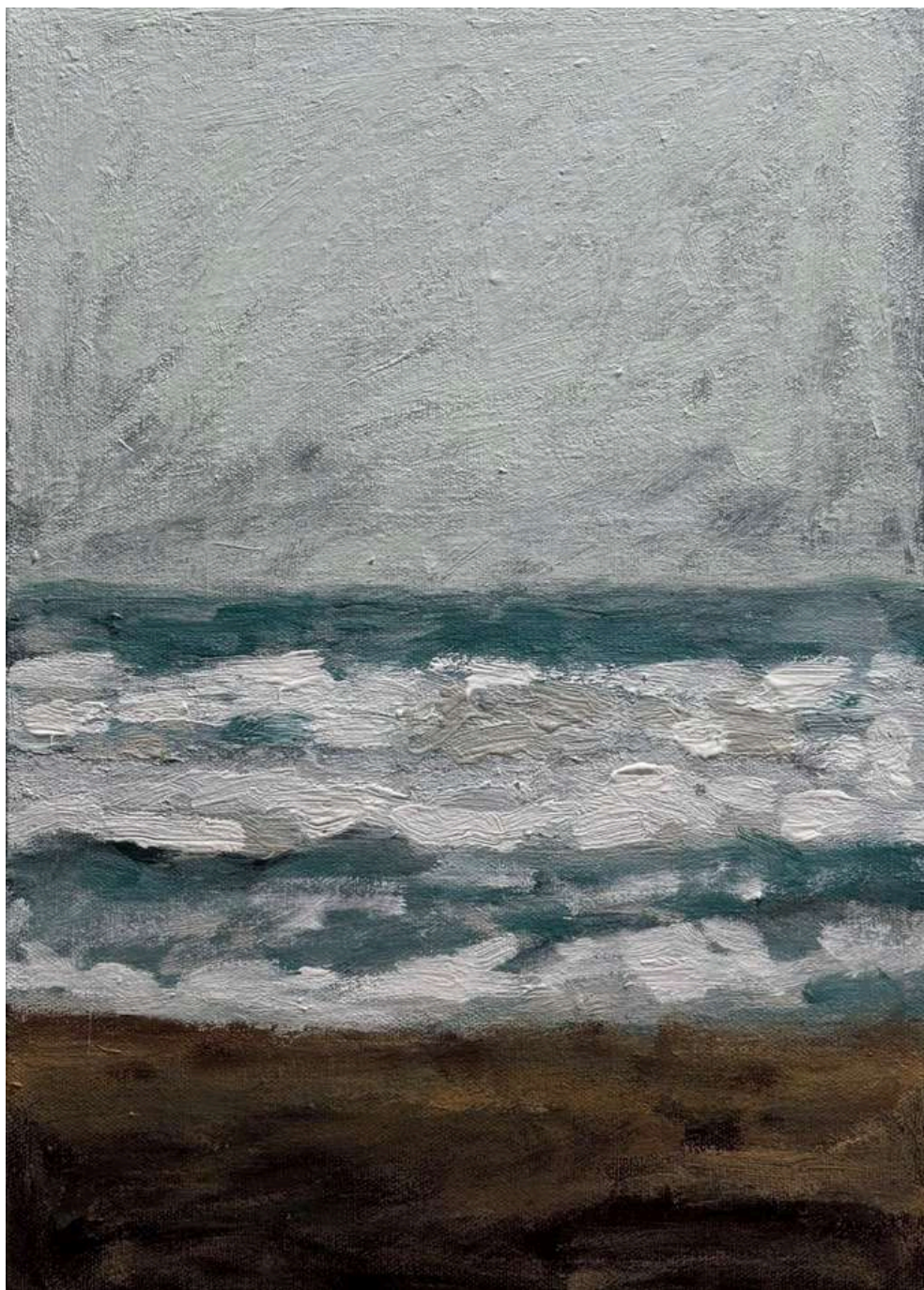
Time Doesn't Stand Still





Muneeba Shakeel | Acrylics on Canvas | 12 x 20 inches

Slipping through my Fingers



Muneeba Shakeel | Acrylics on Canvas | 9.5 x 14 inches

Past, Present & Future





## **Rabia Mohsin**

Rabia Mohsin graduated with a BFA from NCA Lahore in 2024, specializing in miniature painting. She lives and works in Lahore, Pakistan.

Her paintings depict intense landscapes that feel both familiar and distant. Evoking a strange unease, these muted and bruised lands speak of histories both lived and imagined. Through subtle, transparent layers and washes, Mohsin builds an overwhelming tension that suggests forces beyond control. Through her work, she seeks to express the fragility of a seemingly strong world, on the brink of transformation.





Rabia Mohsin | Opaque Watercolors on Wasli | 13 x 20.5 inches

The Tempest Unfolds





Rabia Mohsin | Opaque Watercolors on Wasli | 9 x 15 inches

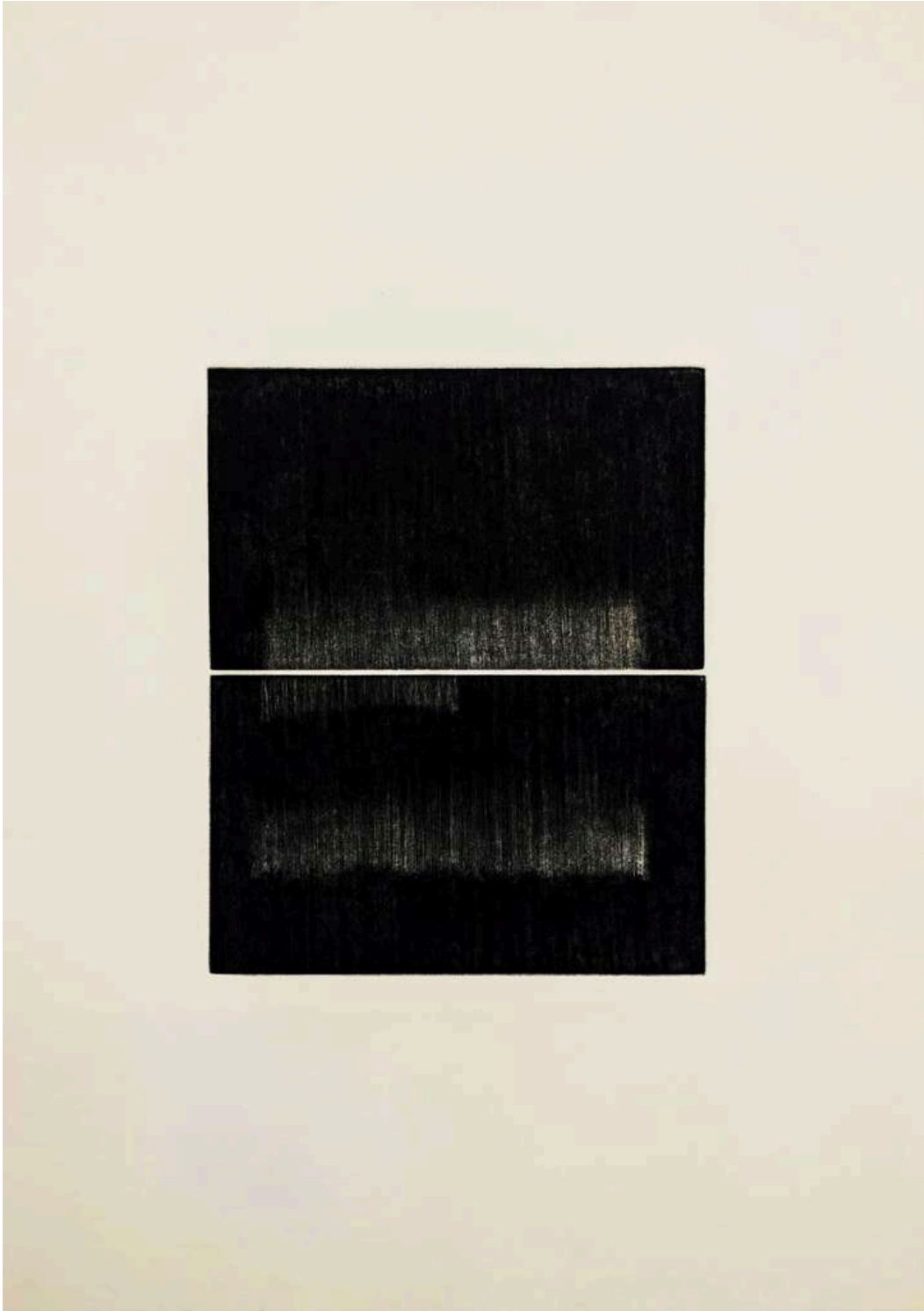
The Wind of Change



**Rafay Talpur**

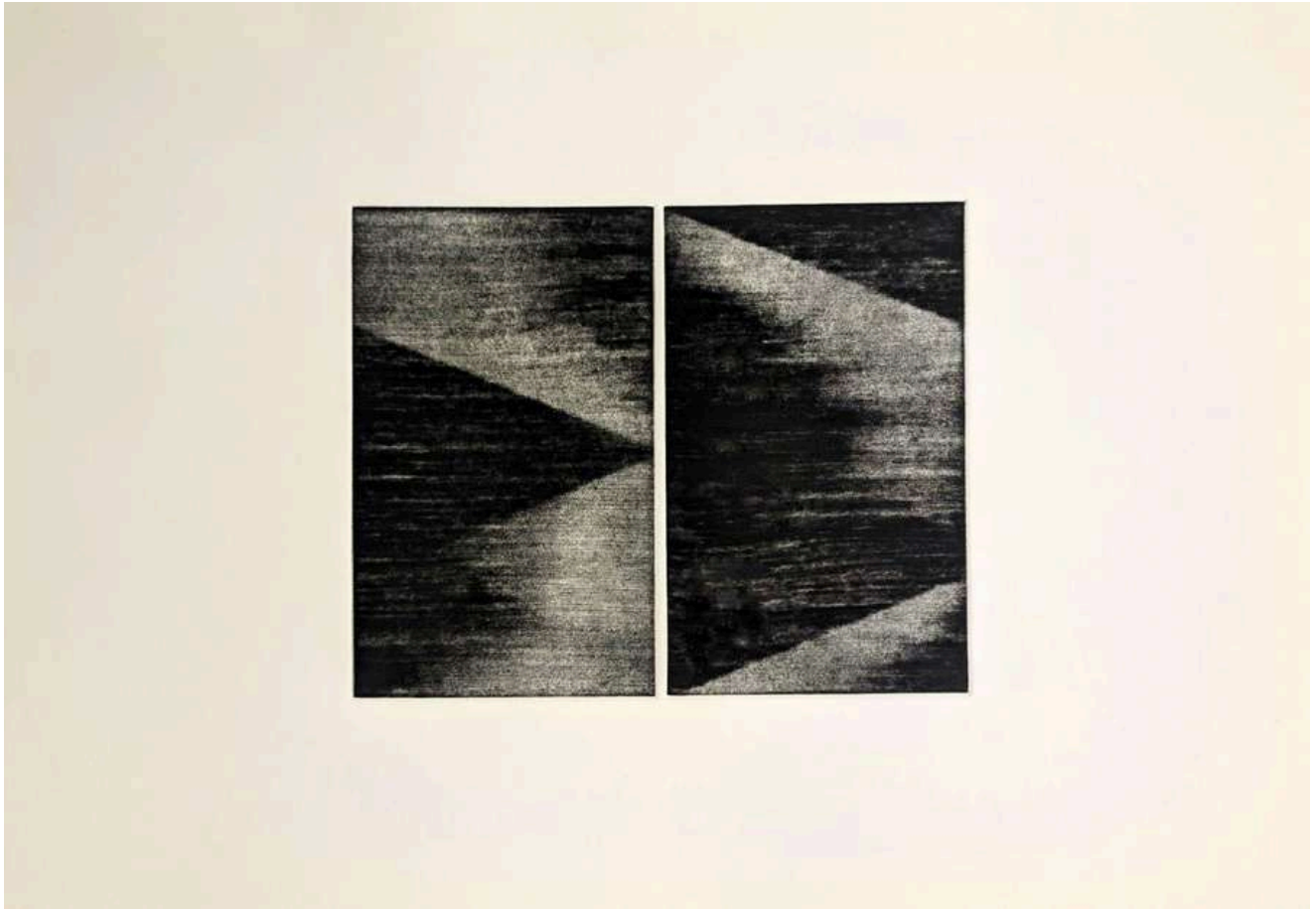
My work is inspired by personal experiences, particularly my time at a madrassa, where even minor mistakes were met with harsh punishment. Additionally, being forced to sleep in complete darkness made me feel suffocated, making light essential for my comfort. Through my art, I explore and recreate light and its reflections, depicting where it falls and how it interacts with its surroundings. I create drawings of shadow patterns on walls in dark indoor spaces, capturing the tension between light and darkness as a reflection of my past experiences.





Rafay Talpur | Dry Point | 12 x 16 inches | Edition 1/3

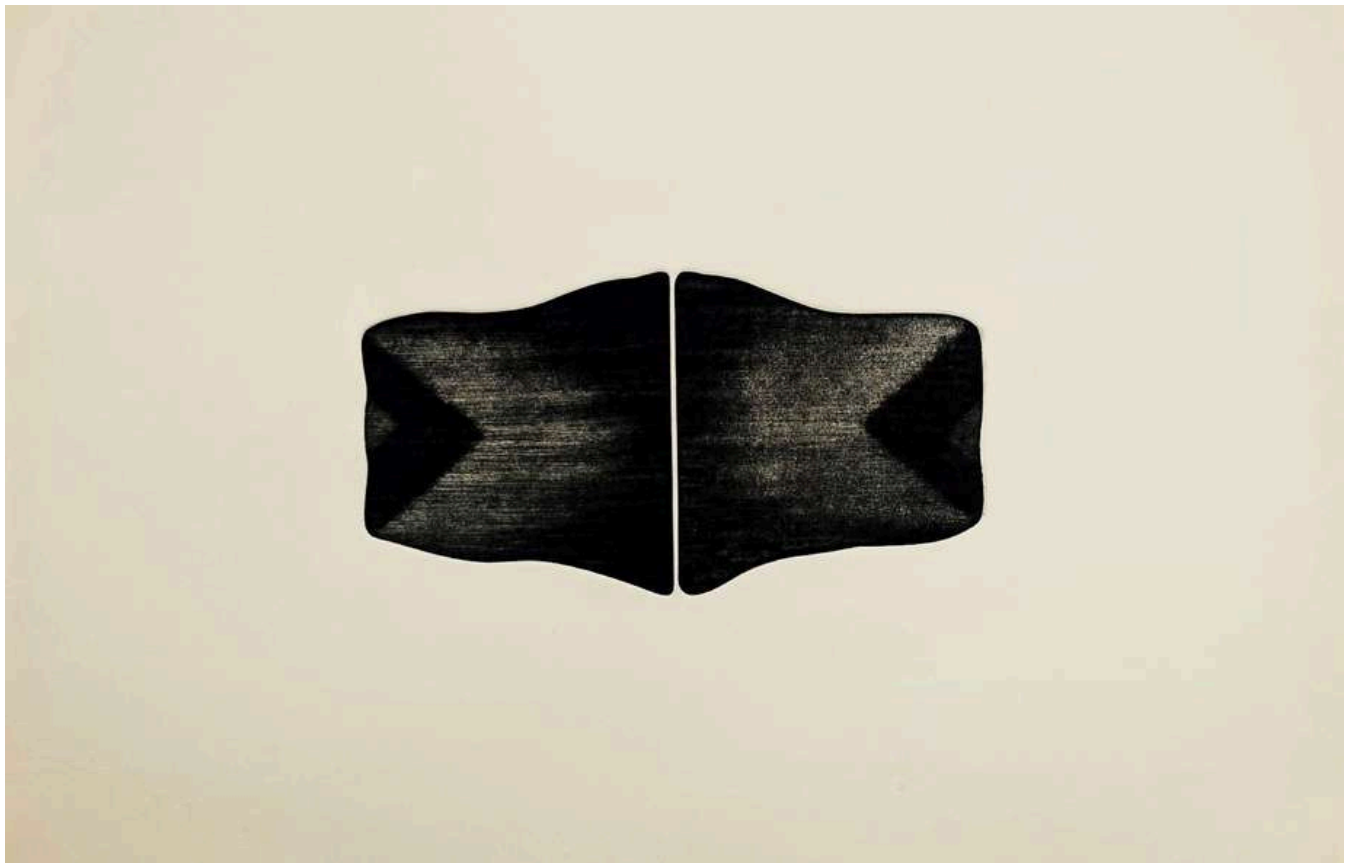
Cloudy



Rafay Talpur | Dry Point | 12 x 16 inches | Edition 1/1

Sindhu





Rafay Talpur | Dry Point | 8 x 14 inches | Edition 1/3

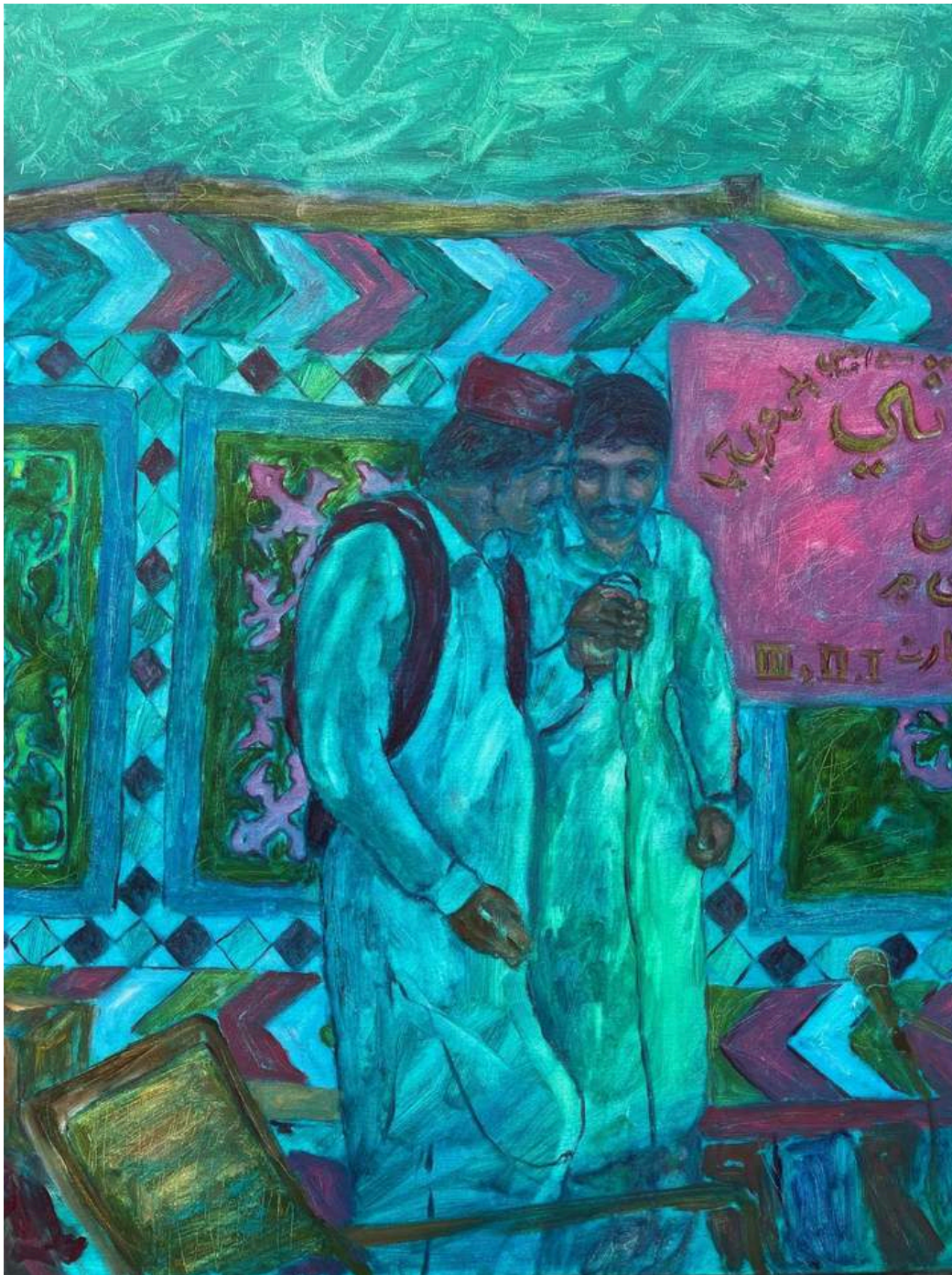
Daur



## **Sabir Hussayn**

Sabir Hussayn is a Lahore-based artist who recently graduated from the National College of Arts, Lahore. His process reflects a personal archive, exploring the realms of memory, identity, and emotional expression by transforming archival family photographs into nuanced narratives. He infuses his work with cultural continuity and nostalgia, reinterpreting memories and emotions to instill a sense of connection and shared understanding with his viewers.





Sabir Hussayn | Oil on Canvas | 18 x 24 inches

Farewell 1981





Sabir Hussayn | Oil on Canvas | 8 x 11 inches

Qasim





Sabir Hussayn | Oil on Canvas | 8 x 11 inches

Winter 2001





## **Swarim Abid**

My artistic practice primarily explores the quiet transformations embedded in everyday life, where time leaves its mark through tarnish and decay. Using the process of chemical oxidation on silver-gilded canvases, I depict human figures and mundane objects that reflect the passage of time, capturing the tension between permanence and impermanence. Through a structured yet organic use of photographic imagery, I investigate how the ordinary is reshaped by time, embracing the beauty found in slow deterioration.

The materiality of silver leaf plays a crucial role in my process—its oxidation becomes an active element within the work, mirroring the way surfaces, visuals, and experiences shift and erode over time. By utilizing the rich natural metallic colors silver brings out in its various oxidation states and building layers over it—dark to light—I create visuals that resonate with the decorative patina-like effects of silver. The unpredictability of tarnish echoes the transient nature of existence, where memories and experiences are layered, altered, and revealed through wear.

By juxtaposing rigid geometries with the organic process of oxidation, my paintings reflect the delicate balance between order and chaos. My work invites viewers to reconsider decay, not as an endpoint, but as a quiet transformation, where the passage of time reveals rather than erases, allowing new narratives to emerge from the past.





Swarim Abid | Oil Paints & Oxidized Silver Leaf on Canvas | 27 x 35 inches

Unread





Swarim Abid | Oil Paints, Colored Foil & Oxidized Silver Leaf on Canvas  
27 x 35 inches

The Ornate Cage





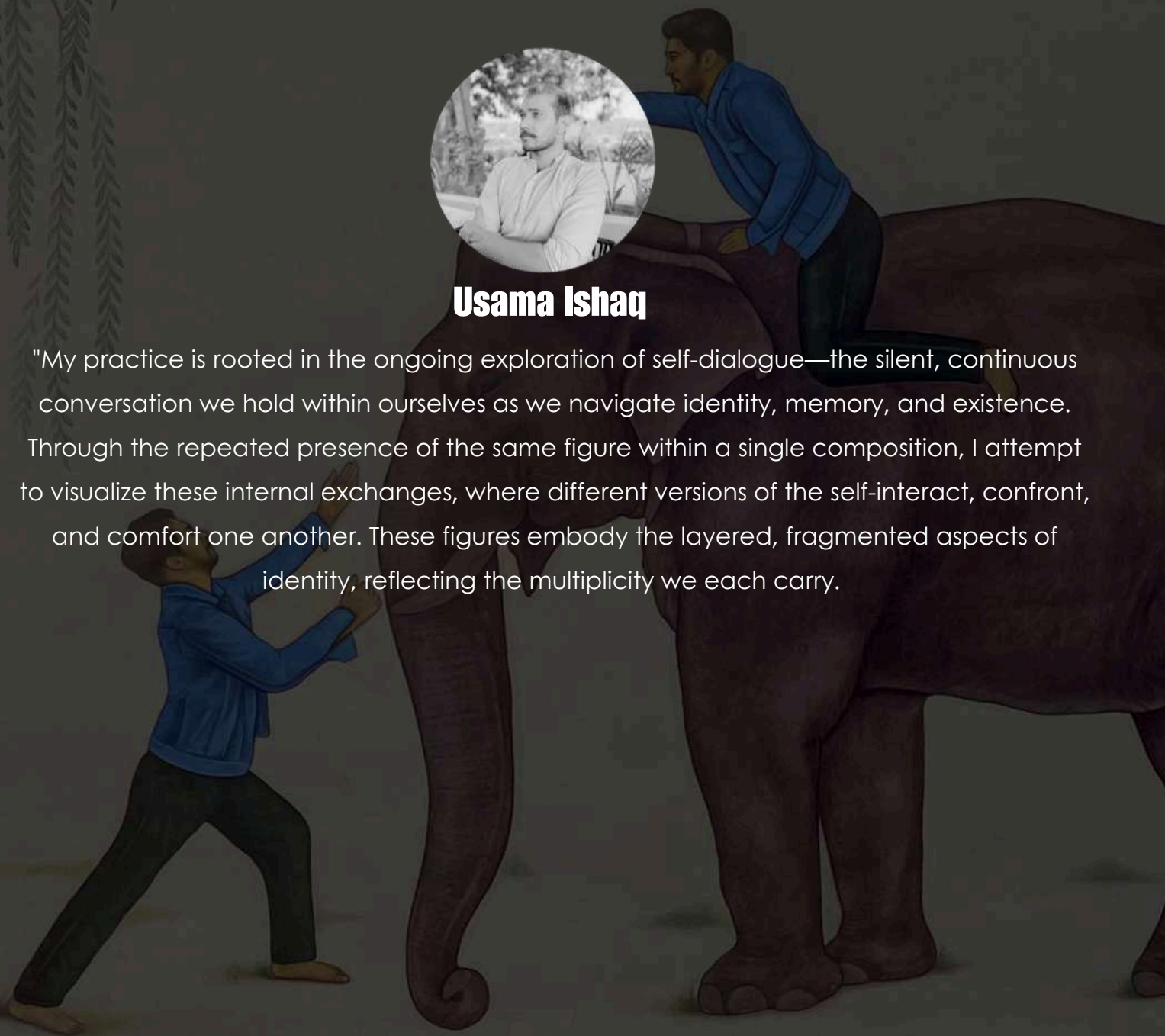
Swarim Abid | Oil Paints & Oxidized Silver Leaf on Canvas | 29 x 49 inches

Threshold



## Usama Ishaq

"My practice is rooted in the ongoing exploration of self-dialogue—the silent, continuous conversation we hold within ourselves as we navigate identity, memory, and existence. Through the repeated presence of the same figure within a single composition, I attempt to visualize these internal exchanges, where different versions of the self-interact, confront, and comfort one another. These figures embody the layered, fragmented aspects of identity, reflecting the multiplicity we each carry."







Usama Ishaq | Gouache on Wasli | 10 x 13.5 inches

Conversations in Green



Usama Ishaq | Gouache on Wasli | 14.5 x 21 inches

The Weight of Dialogue





## **Waleed Bin Shahzad**

My work reveals the tension between real and surreal, where what is invisible feels just as immediate as what is in front of us.



Waleed Bin Shahzad | Gouache on Wasli | 5 x 13 inches

تنہائی مربع





Waleed Bin Shahzad | Gouache on Wasli | 7 x 7 inches

محجوب



Waleed Bin Shahzad | Gouache on Wasli | 7.5 x 11.75 inches  
تشکیل تضاد

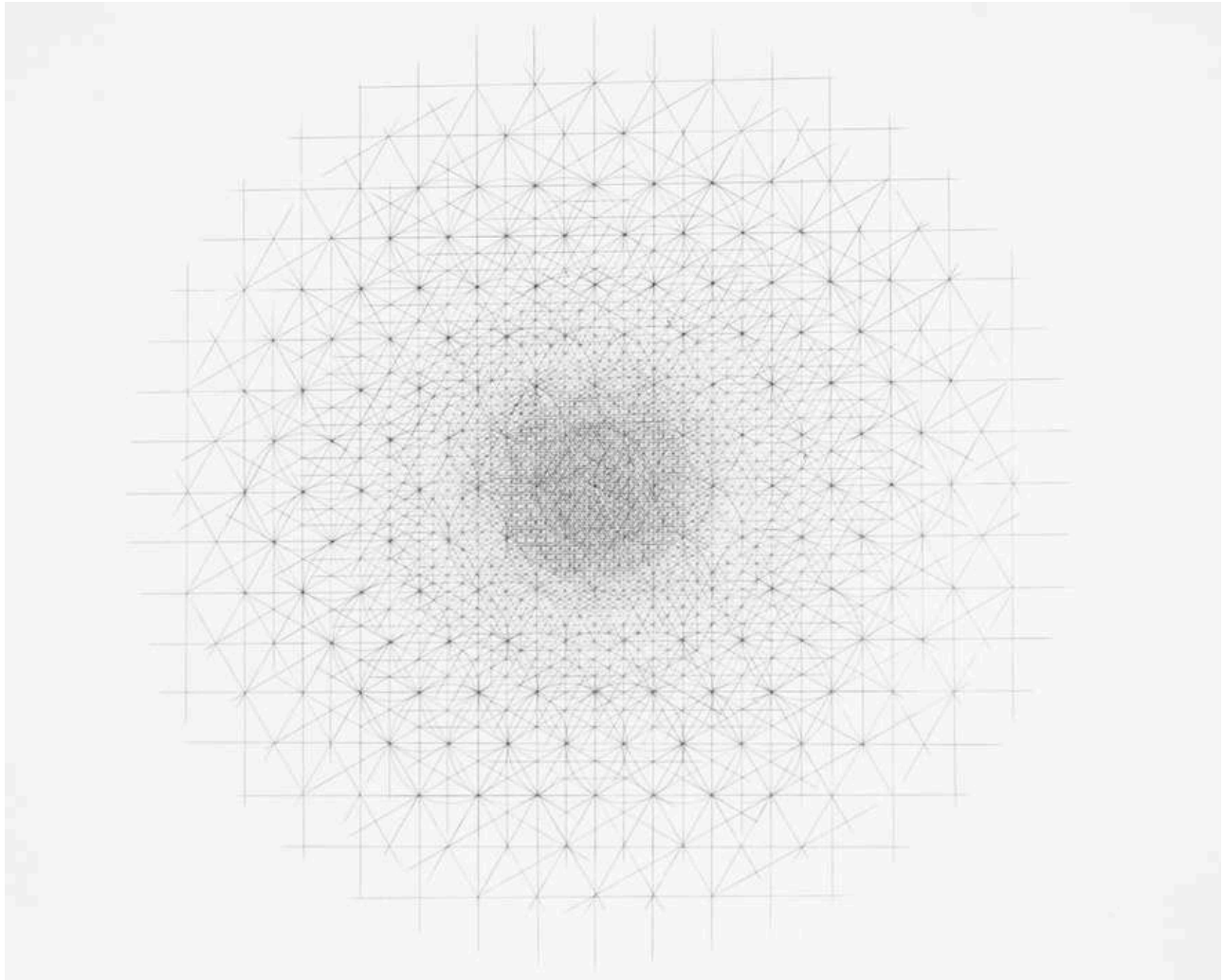




**Zeeshan Amjad**

My work explores the connections between individual emotions—joy, sorrow, and nostalgia—as they intersect, overlap, and diverge to form a shared tapestry of human memory. Using repetition, geometry, and flowing compositions, I focus on how we are all interconnected through our experiences. Themes of understanding, empathy, chaos, and calm converge in my art to express the universal nature of human emotion. Each piece reflects how these emotional threads shape our relationships, reveal the layers of human connection, and create shared stories that transcend the individual. My work invites viewers to reflect on their own emotional experiences and the unseen ties that link us all.

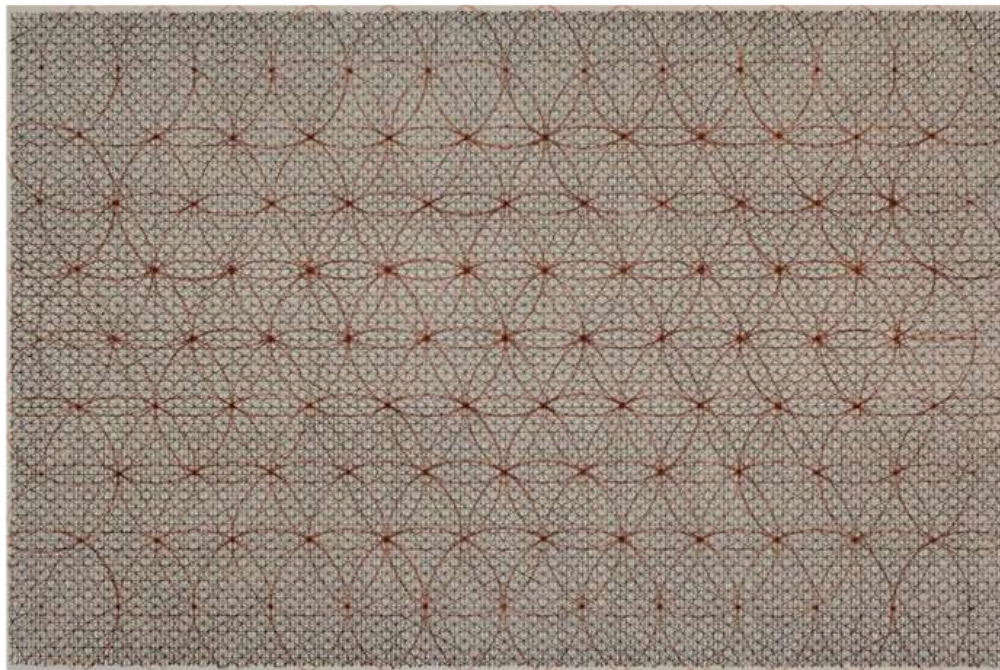
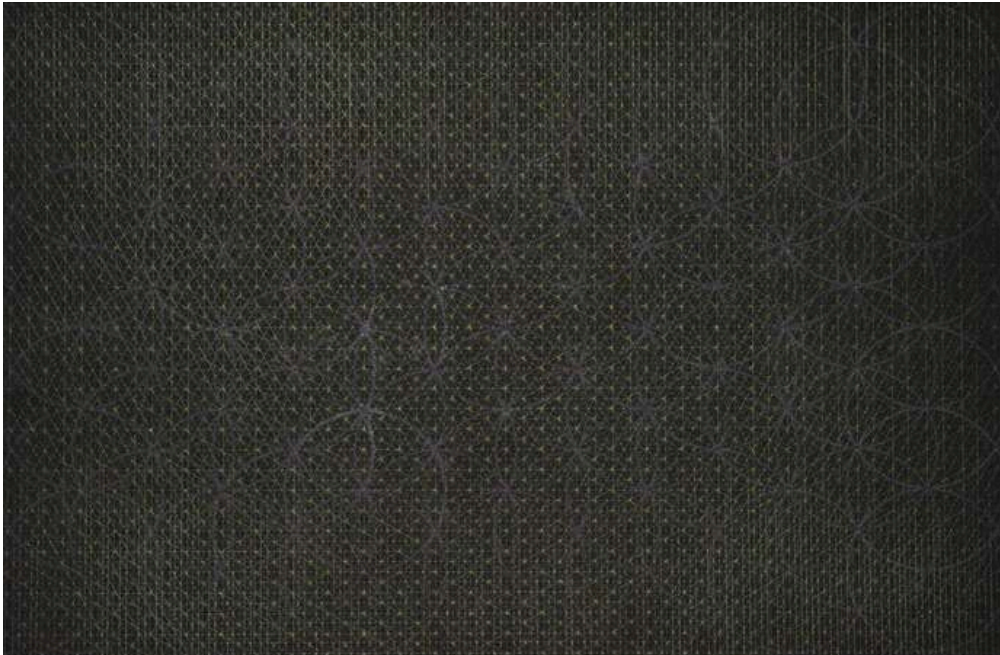




Zeeshan Amjad | Pen on Archival Paper | 12 x 12 inches

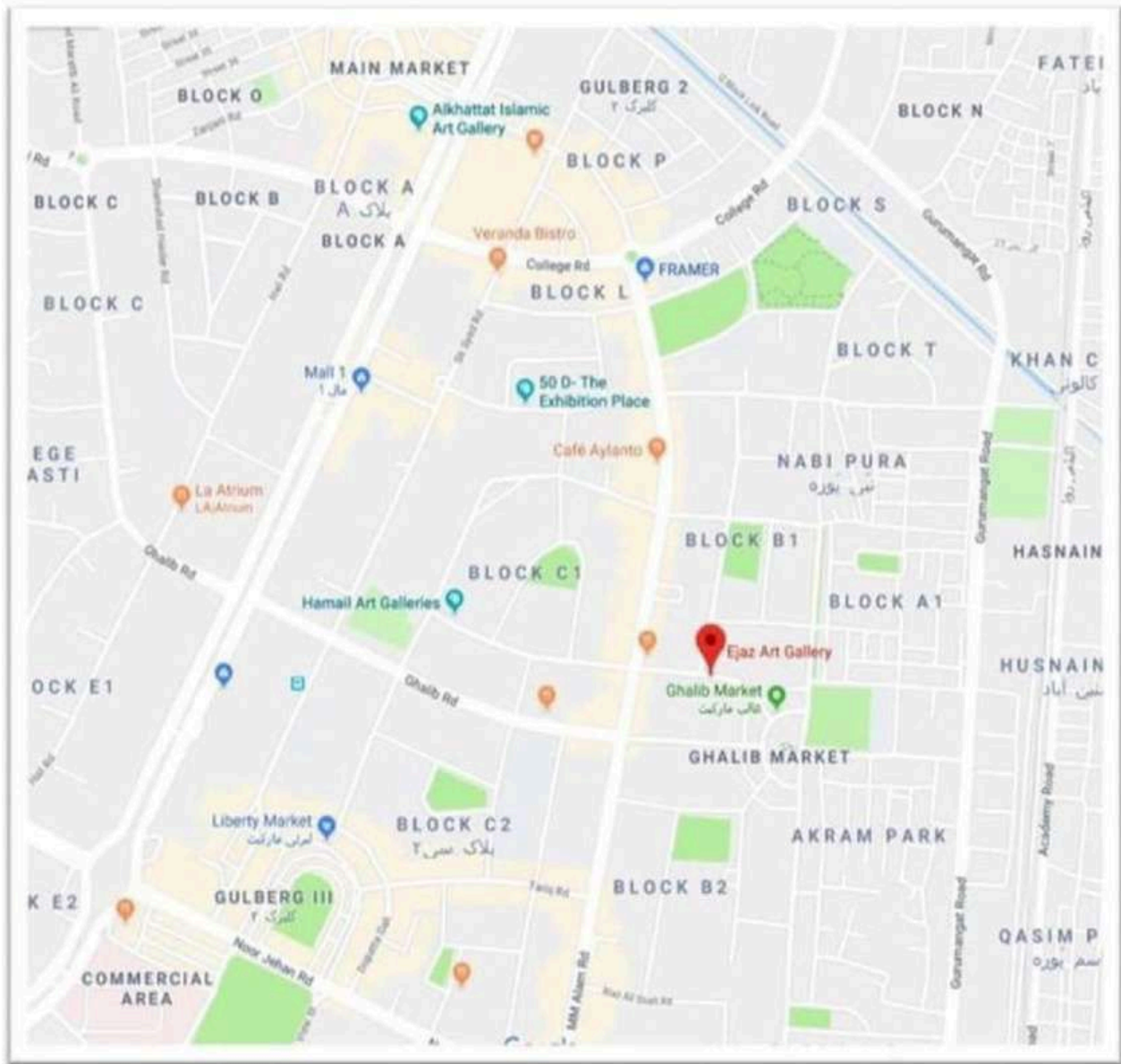
The Network of One





Zeeshan Amjad | Gouache & Pen on Archival Paper | 7 x 10 inches (both)  
(Dptych)

Changing Dimensions I & II



79-B/1, off M.M. Alam Road, Gulberg III, Lahore, Pakistan

Cell: +92 300 8447748, Ph: 042-35718038, 35762784

www.ejazartgallery.com info@ejazartgallery.com ejazartgalleries